



DIPAK LED LIGHT

SAVE ENERGY

SAVE FUTURE....



ABOUT US

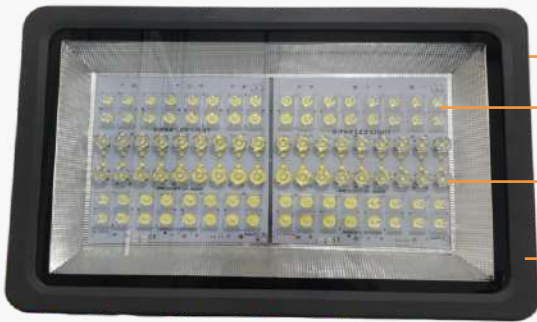
We would like to introduce our company DEEPAK ENTERPRISE (LED DIVISION) that has been in business of led lights for the past many years.

We are ISO 9001:2015 CERTIFIED COMPANY.

We, Dipak Led Light, are one of the distinguished manufacturer, supplier, trader and importer of a huge number of Flood Light, Street Light, High Bay Light, Tube Light, Down light. Under this, we offer Solis Flood Light, Luce Flood Light, Claus Flood Light, Solis Street Light, Luce Street Light, Solis High Bay Light, Luce High Bay Light, Tube Light, down light. With support of our widely accessible distribution network, we are able to serve numerous industry clients by supplying international quality products.

To attain maximum client satisfaction is the sole and core motto of our company and we ensure its attainment with our transparent and ethical business practices. We are backed by a spacious warehouse that is installed with the latest and modern technology based equipment to arrange and maintain bulk quantities of products in a safe manner. To manage the entire workspace, we have hired an adroit and skilled workforce, which is able to fulfil clients' demands in an efficient way by putting in its best efforts. Offering utmost quality is our utmost priority. Thereby, we conduct a stringent quality checking process to ensure that the products sourced by our vendors are reliable in terms of quality and performance before the final dispatch. Along with this, we are tied-up with many reputed transport firms and with the aid of our expert logistics professionals; We are able to deliver clients' orders within the promised time frame.

SOLIS FLOOD LIGHT



- SS screw
- Protective Toughen Glass Transparent
- Lens Of Optic Grade Material
- Ip65

Solis Flood Light is a reliable and value for money light design which is specially for use in multiple application. The light level archived by this flood light is best in it`s class. Special lens used for delivering maximum output which is help in saving of electricity and cost as well. High heat conductive material used for fixture which give long life to LED.

ITEM CODE	WATTAGE	LUMEN OUTPUT
DSF-01-W66PoLeWa24	66W	~9570lm
DSF-02-W93PoLeWa24	93W	~13485lm
DSF-03-W201PoLeWa24	201W	~29145lm
DSF-04-W246PoLeWa24	246W	~35670lm
DSF-05-W300PoLeWa24	300W	~43500lm
DSF-06-W408PoLeWa24	408W	~59160lm
DSF-07-W509PoLeWa24	509W	~73805lm

LIGHTING TECHNOLOGY :

- LIGHT CONTROL : Lens Of Optic Grade Material
- COVER : Toughen Glass Transparent
- LIGHT EMISSION : Direct Distribution

STANDARDS :

- PROTECTION RATING : Ip65
- PERMISSIBLE AMBIENT TEMPERATURE : -20° C + 40° C

MATERIAL :

- LED FIXTURE UNIT : Aluminum, Powder coated

ELECTRICAL CONNECTION :

- CONNECTION : Three Core 1sqmm Wire (Green/Yellow is Earthing)
- SURGE VOLTAGE RESISTANCE : 4kV, 1.2/50µs

COLOES | CCT :



White
5700K - 6500K



Intermediate
4000K - 4500K



Warm white
2700K - 3200K

LIGHT EMISSION :

- LIGHT EMISSION : 0% at 0° inclination

SERVICE LIFE :

- RATED LIFE : ~30000h at 25° C

APPLICATION :

Replacement for Conventional Halogen Area lighting, Party Plots, Facade and building illumination Industrial Outdoors & Indoor, Gym, Shopping Mall, Sport Stadium, etc...



SOLIS STREET LIGHT

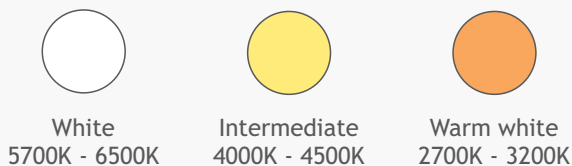
DIPAK LED LIGHT



Solis Street Light is a reliable and value for money light design which is specially for use in road light application. The light level archived by this street light is best in it`s class. Special lens used for covering maximum area which is help in saving of electricity and cost as well. High heat conductive material used for fixture which give long life to LED.

ITEM CODE	WATTAGE	LUMEN OUTPUT
DSS-01-W18PoLeWa24	18W	~2610lm
DSS-02-W24PoLeWa24	24W	~3480lm
DSS-03-W30PoLeWa24	30W	~4350lm
DSS-04-W36PoLeWa24	36W	~5220lm
DSS-05-W48PoLeWa24	48W	~6960lm
DSS-06-W66PoLeWa24	66W	~9570lm
DSS-07-W93PoLeWa24	93W	~13485lm
DSS-08-W120PoLeWa24	120W	~17400lm

COLOES | CCT :



LIGHTING TECHNOLOGY :

LIGHT CONTROL : Lens Of Optic Grade Material
 COVER : Toughen Glass Transparent
 LIGHT EMISSION : Direct Distribution

MATERIAL :

LED FIXTURE UNIT : Aluminum, Powder coated

ELECTRICAL CONNECTION :

CONNECTION : Three Core 1/0.5sqmm Wire
 (Green/Yellow is Earthing)
 SURGE VOLTAGE RESISTANCE : 4kV, 1.2/50µs

LIGHT EMISSION :

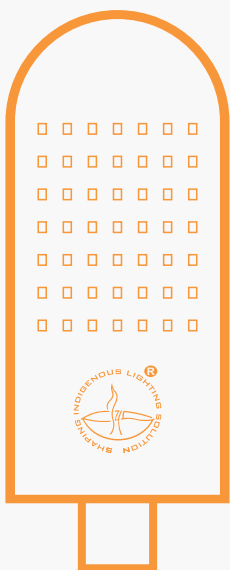
LIGHT EMISSION : 0% at 0° inclination

SERVICE LIFE :

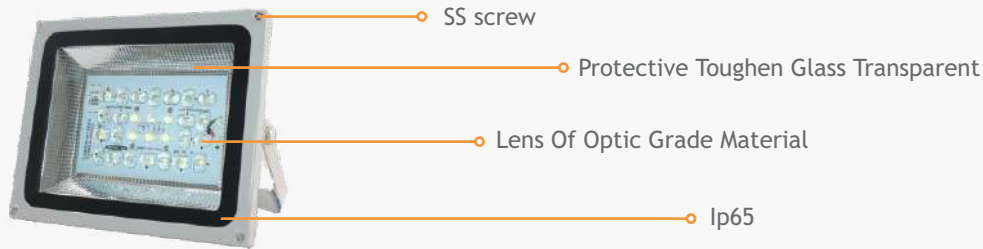
RATED LIFE : ~30000h at 25° C

APPLICATION :

Replacement for Conventional Street light Road, Parking Plot, Outside Building Wall, Basement, etc...



LUCE FLOOD LIGHT



Luce Flood Light is a reliable and value for money light design which is specially for use in multiple application. Light level archived by this flood light is best in it`s class. Special lens used for delivering maximum output which is help in saving of electricity and cost as well.

ITEM CODE	WATTAGE	LUMEN OUTPUT
DLF-01-W36SmLeWa24	36W	~4500lm
DLF-02-W48SmLeWa24	48W	~6000lm
DLF-03-W66SmLeWa24	66W	~8250lm
DLF-04-W93SmLeWa24	93W	~11625lm
DLF-05-W147SmLeWa24	147W	~18375lm
DLF-06-W201SmLeWa24	201W	~25125lm

LIGHTING TECHNOLOGY :

- LIGHT CONTROL : Lens Of Optic Grade Material
- COVER : Toughen Glass Transparent
- LIGHT EMISSION : Direct Distribution

STANDARDS :

- PROTECTION RATING : Ip65
- PERMISSIBLE AMBIENT TEMPERATURE : -20° C + 40° C

MATERIAL :

- LED FIXTURE UNIT : Aluminum, Powder coated

ELECTRICAL CONNECTION :

- CONNECTION : Three Core 1/0.5sqmm Wire (Green/Yellow is Earthing)
- SURGE VOLTAGE RESISTANCE : 4kV, 1.2/50µs

LIGHT EMISSION :

- LIGHT EMISSION : 0% at 0° inclination

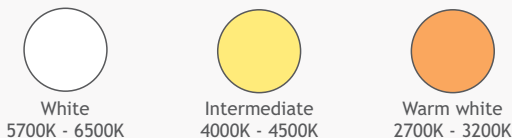
SERVICE LIFE :

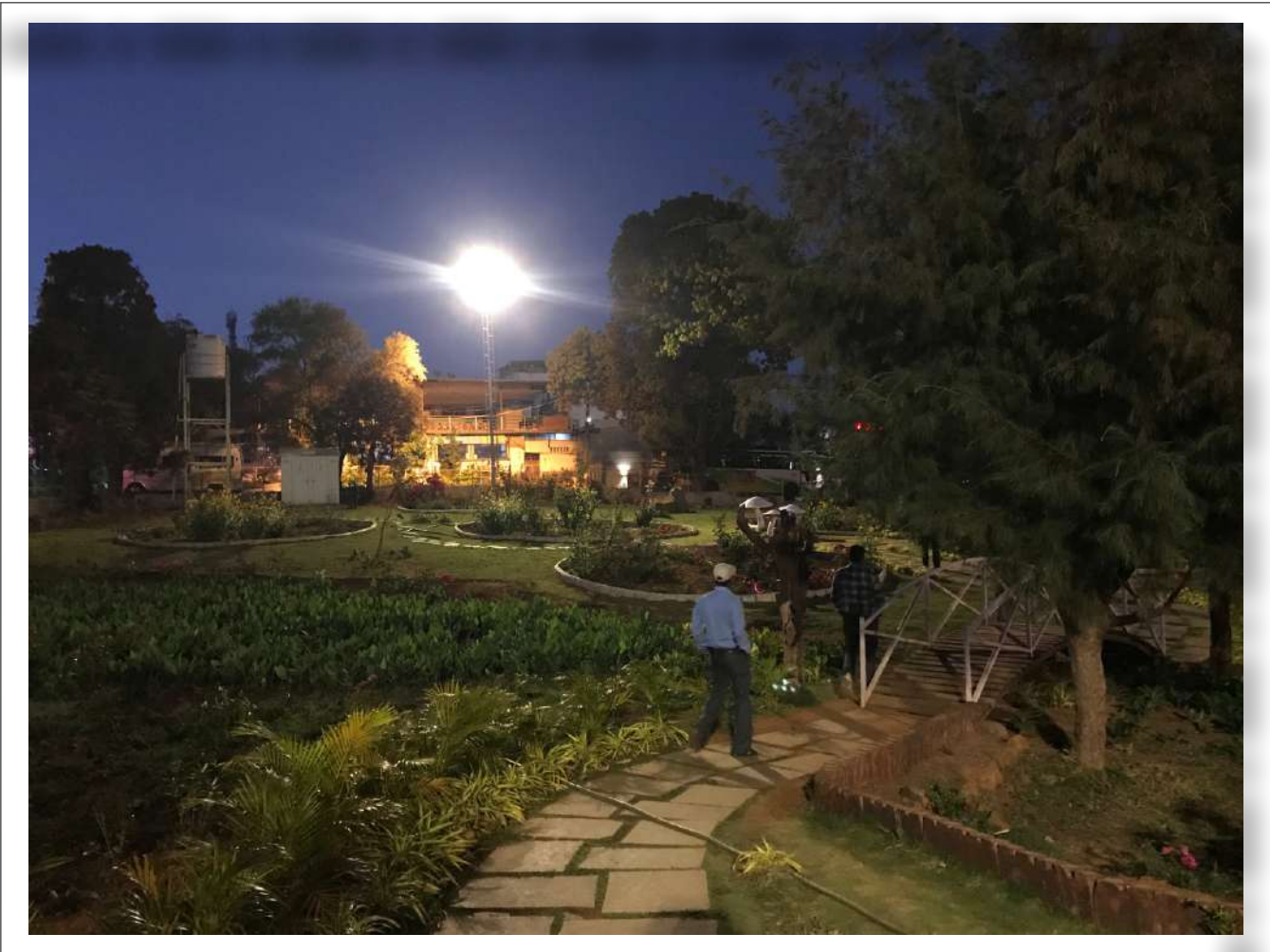
- RATED LIFE : ~30000h at 25° C

APPLICATION :

Replacement for Conventional Halogen Area lighting, Party Plots, Facade and building illumination Industrial Outdoors & Indoor, Gym, Shopping Mall, Sport Stadium, etc...

COLOES | CCT :





LUCE STREET LIGHT

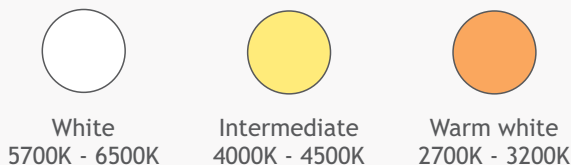
DIPAK LED LIGHT



Luce Street Light is a techno-comercial model. Specially design for usefully at everywhere. The light level archived by this street light is best in it`s class. Special Lens used for cover wider Area it will help to covering maximum area between two pole. Made from very durable material.

ITEM CODE	WATTAGE	LUMEN OUTPUT
DLS-01-W18SmLeWa12	18W	~2250lm
DLS-02-W24SmLeWa12	24W	~3000lm
DLS-03-W30SmLeWa12	30W	~3750lm
DLS-04-W36SmLeWa12	36W	~4500lm
DLS-05-W48SmLeWa12	48W	~6000lm
DLS-06-W66SmLeWa12	66W	~8250lm
DLS-07-W93SmLeWa12	93W	~11625lm
DLS-08-W120SmLeWa12	120W	~15000lm

COLOES | CCT :



LIGHTING TECHNOLOGY :

- LIGHT CONTROL : Lens Of Optic Grade Material
- COVER : Toughen Glass Transparent
- LIGHT EMISSION : Direct Distribution

MATERIAL :

- LED FIXTURE UNIT : Aluminum, Powder coated

ELECTRICAL CONNECTION :

- CONNECTION : Three Core 1sqmm Wire (Green/Yellow is Earthing)
- SURGE VOLTAGE RESISTANCE : 4kV, 1.2/50µs

LIGHT EMISSION :

- LIGHT EMISSION : 0% at 0° inclination

SERVICE LIFE :

- RATED LIFE : ~30000h at 25° C

APPLICATION :

Replacement for Conventional Street light Road, Parking Plot, Outside Building Wall, Basement



CLARUS HIGHBAY LIGHT

DIPAK LED LIGHT



Clarus High Bay Light is a reliable and value for money light design which is specially multipurpose application. The light level archived by this high bay light is best in it`s class. Special LED arrangement for long lasting and maximum area covering

ITEM CODE	WATTAGE	LUMEN OUTPUT
DCLH-01-W66SmWa24	66W	~7260lm
DCLH-02-W93SmWa24	93W	~10230lm
DCLH-03-W147SmWa24	147W	~16170lm
DCLH-04-W201SmWa24	201W	~22110lm

LIGHTING TECHNOLOGY :

LIGHT EMISSION : Direct Distribution

MATERIAL :

LED FIXTURE UNIT : Aluminum, Powder coated

ELECTRICAL CONNECTION :

CONNECTION : Three Core 1/0.5sqmm Wire
(Green/Yellow is Earthing)

SURGE VOLTAGE : 4kV, 1.2/50µs
RESISTANCE :

LIGHT EMISSION :

LIGHT EMISSION : 0% at 0° inclination

SERVICE LIFE :

RATED LIFE : ~30000h at 25° C

APPLICATION :

Replacement for Conventional Halogen Area lighting, Party Plots, Industrial Outdoors & Indoor, Gym Shopping Mall, Sport Stadium, etc...

COLOES | CCT :



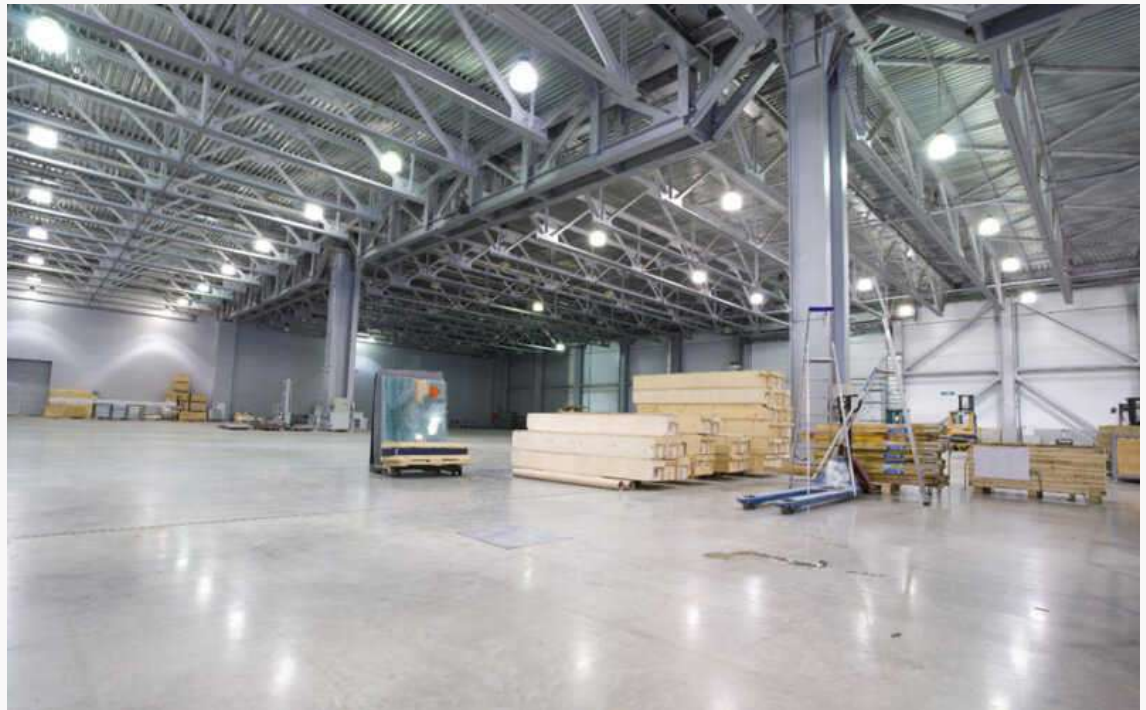
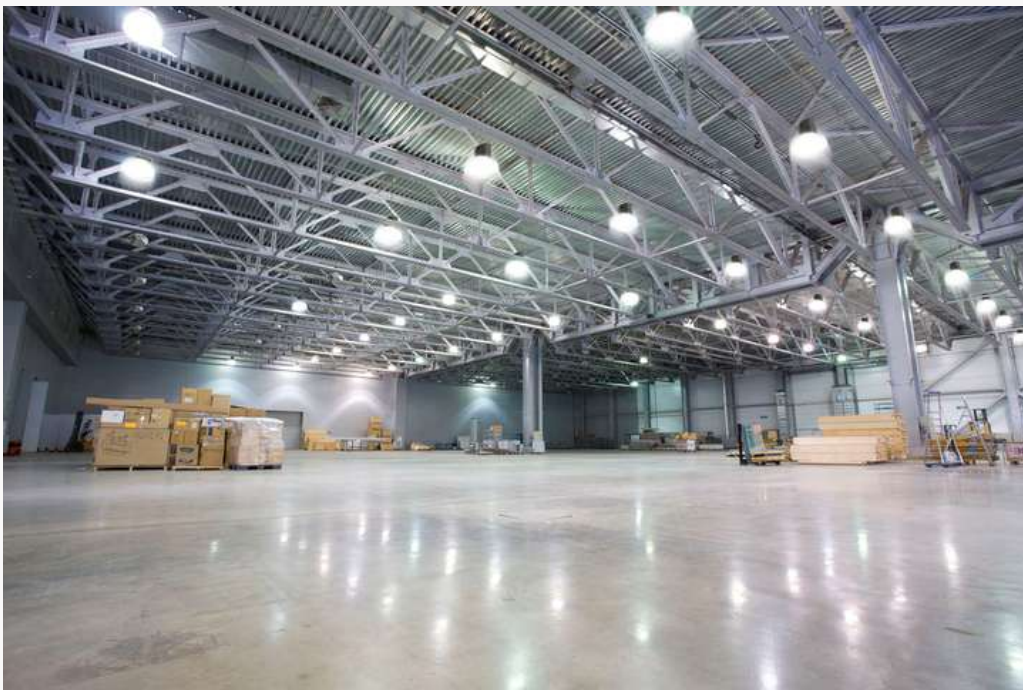
White
5700K - 6500K



Intermediate
4000K - 4500K

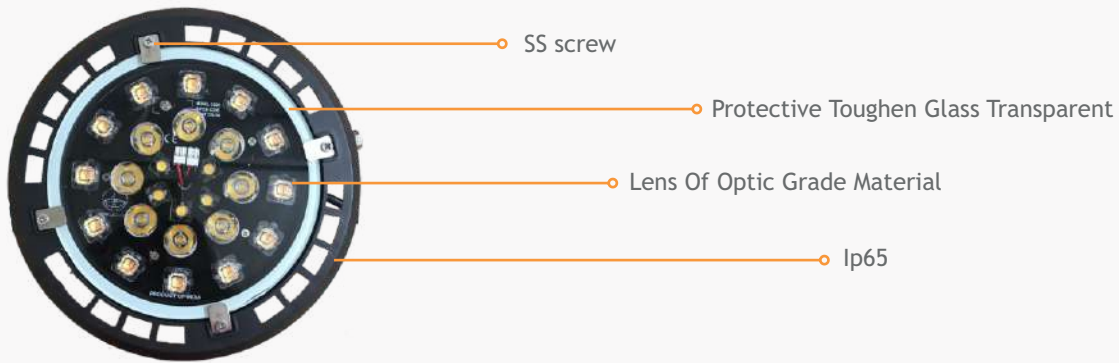


Warm white
2700K - 3200K



SOLIS HIGHBAY LIGHT

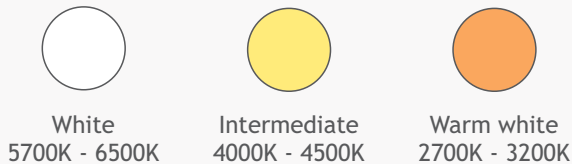
DIPAK LED LIGHT



Solis High Bay Light is a reliable and value for money light design which is specially multipurpose application. The light level archived by this high bay light is best in it`s class. Special lens used for delivering maximum output which is help to save electricity and cost. and output degree.

ITEM CODE	WATTAGE	LUMEN OUTPUT
DSH-01-W80PoLeWa24	80W	-11600lm
DSH-02-W120PoLeWa24	120W	-17400lm
DSH-03-W147PoLeWa24	147W	-21315lm
DSH-04-W201PoLeWa24	201W	-29145lm

COLOES | CCT :



LIGHTING TECHNOLOGY :

LIGHT CONTROL : Lens Of Optic Grade Material
 COVER : Toughen Glass Transparent
 LIGHT EMISSION : Direct Distribution

MATERIAL :

LED FIXTURE UNIT : Aluminum, Powder coated

ELECTRICAL CONNECTION :

CONNECTION : Three Core 1sqmm Wire Open Side (Green/Yellow is Earthing)
 SURGE VOLTAGE RESISTANCE : 4kV, 1.2/50µs

LIGHT EMISSION :

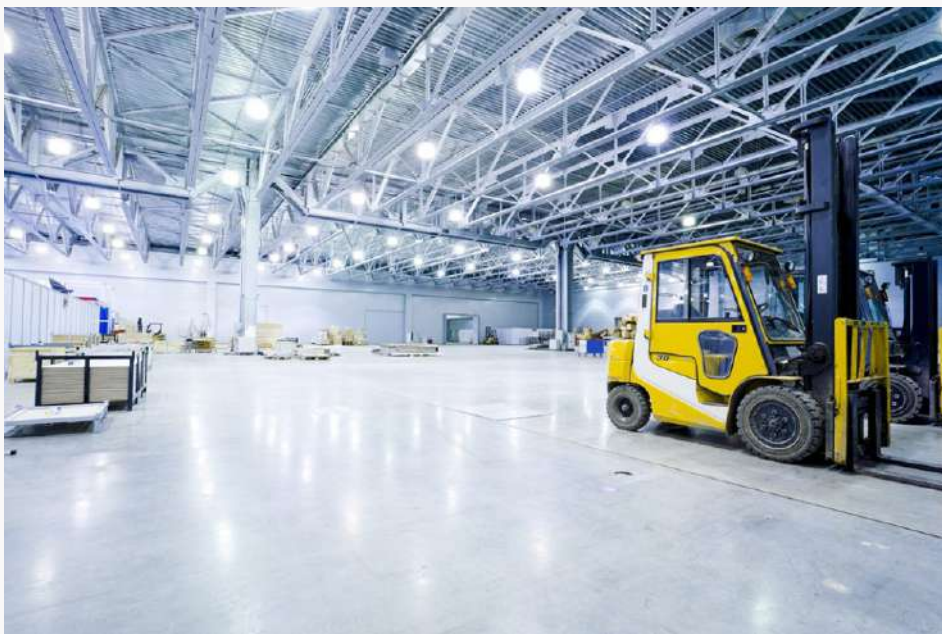
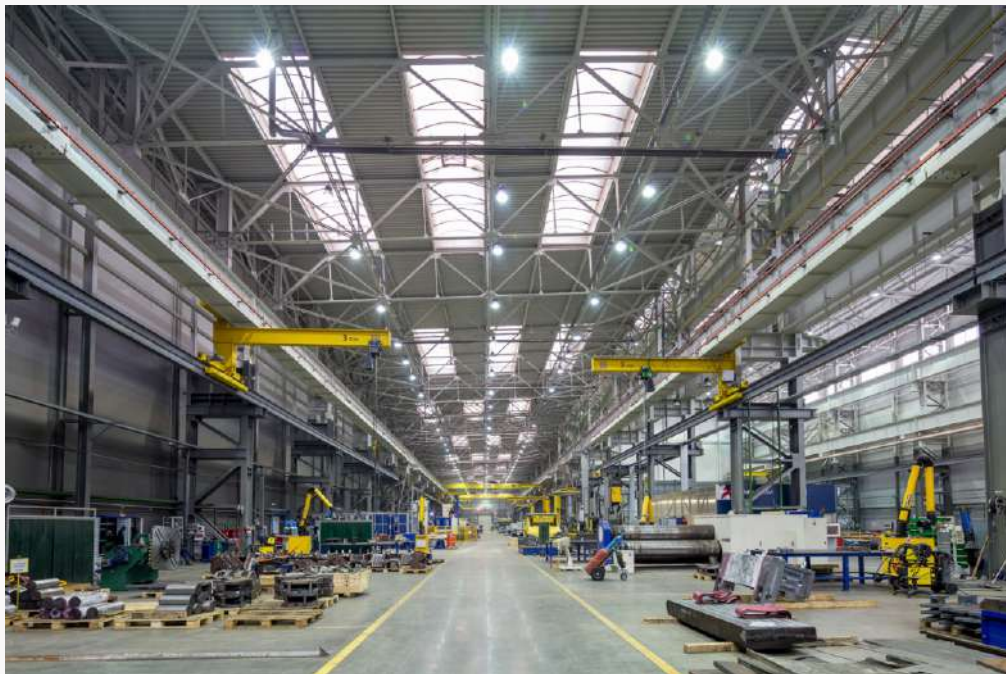
LIGHT EMISSION : 0% at 0° inclination

SERVICE LIFE :

RATED LIFE : ~30000h at 25° C

APPLICATION :

Replacement for Conventional Halogen Area lighting, Party Plots, Facade and building illumination Industrial Outdoors & Indoor, Gym, Shopping Mall, Sport Stadium, Decoration, etc...



CLARUS FLOOD LIGHT

DIPAK LED LIGHTS



- Protective Toughen Glass Transparent
- SS screw
- IP 65



CLARUS FLOOD LIGHT is a reliable and cost-effective flood light designed for large-scale exterior installations. The light levels achieved by this compact fixture make it ideal for wall-washing and flood lighting applications. Illuminate maximum covering area in its class, Specially made for industrial and long lasting purpose. Specially design for long service life.

ITEM CODE	WATTAGE	LUMEN OUTPUT
DCLF-01-W50SmWa12	50W	~5000lm
DCLF-02-W100SmWa12	100W	~11000lm
DCLF-03-W150SmWa12	150W	~16,500lm
DCLF-04-W200SmWa12	200W	~22000lm
DCLF-05-W300SmWa12	300W	~33000lm
DCLF-06-W400SmWa12	400W	~44000lm

LIGHTING TECHNOLOGY :

- COVER : Toughen Glass Transparent
- LIGHT EMISSION : Direct Distribution

STANDARDS :

- PROTECTION RATING : Ip65
- PERMISSIBLE AMBIENT TEMPERATURE : -20° C + 40° C

MATERIAL :

- LED FIXTURE UNIT : Aluminum, Powder coated

ELECTRICAL CONNECTION :

- CONNECTION : Three Core 1/0.5sqmm Wire (Green/Yellow is Earthing)
- SURGE VOLTAGE RESISTANCE : 4kV, 1.2/50µs

LIGHT EMISSION :

- LIGHT EMISSION : 0% at 0° inclination

SERVICE LIFE :

- RATED LIFE : ~30000h at 25° C

APPLICATION :

Replacement for Conventional Halogen Area lighting, Party Plots, Facade and building illumination Industrial Outdoors & Indoor, Gym, Shopping Mall, Sport Stadium, etc...

COLORS | CCT :

		
White 5700K - 6500K	Intermediate 4000K - 4500K	Warm white 2700K - 3200K
		
BLUE	RED	True Green
		
Sodium	Dark Pink	

ATTRACTIVE PRICE

DC CLARUS FLOOD LIGHT

DIPAK LED LIGHT



DC CLARUS FLOOD LIGHT is a reliable and cost-effective flood light designed for large-scale exterior installations. The light levels achieved by this compact fixture make it ideal for wall-washing and flood lighting applications. It illuminates maximum covering area in its class, specially made for industrial and long-lasting purposes. Specially designed for long service life.

ITEM CODE	WATTAGE	LUMEN OUTPUT
DCLF-02-W100SmWa12	100W	~11000lm
DCLF-04-W200SmWa12	200W	~22000lm

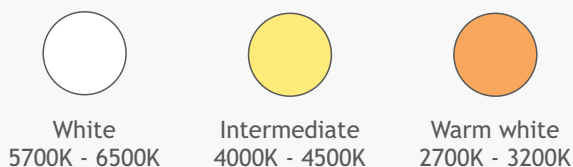
LIGHTING TECHNOLOGY :

- COVER : Toughen Glass Transparent
- LIGHT EMISSION : Direct Distribution

STANDARDS :

- PROTECTION RATING : Ip65
- PERMISSIBLE AMBIENT TEMPERATURE : -20° C + 40° C

COLORS | CCT :



MATERIAL :

- LED FIXTURE UNIT : Aluminum, Powder coated

ELECTRICAL CONNECTION :

- CONNECTION : Three Core 1/0.5sqmm Wire (Green/Yellow is Earthing)
- SURGE VOLTAGE RESISTANCE : 4kV, 1.2/50µs

LIGHT EMISSION :

- LIGHT EMISSION : 0% at 0° inclination

SERVICE LIFE :

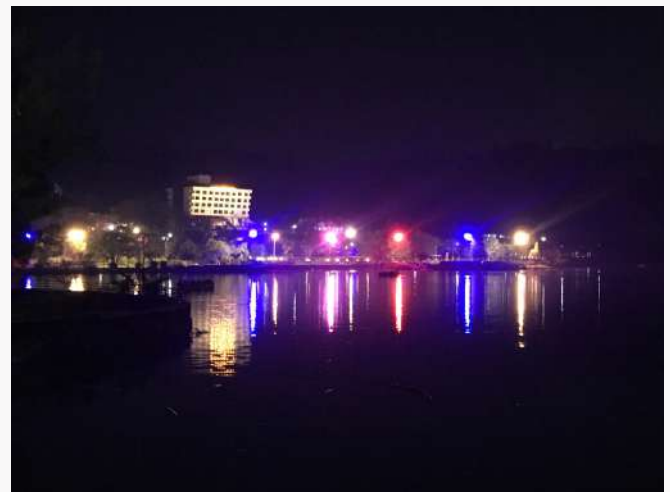
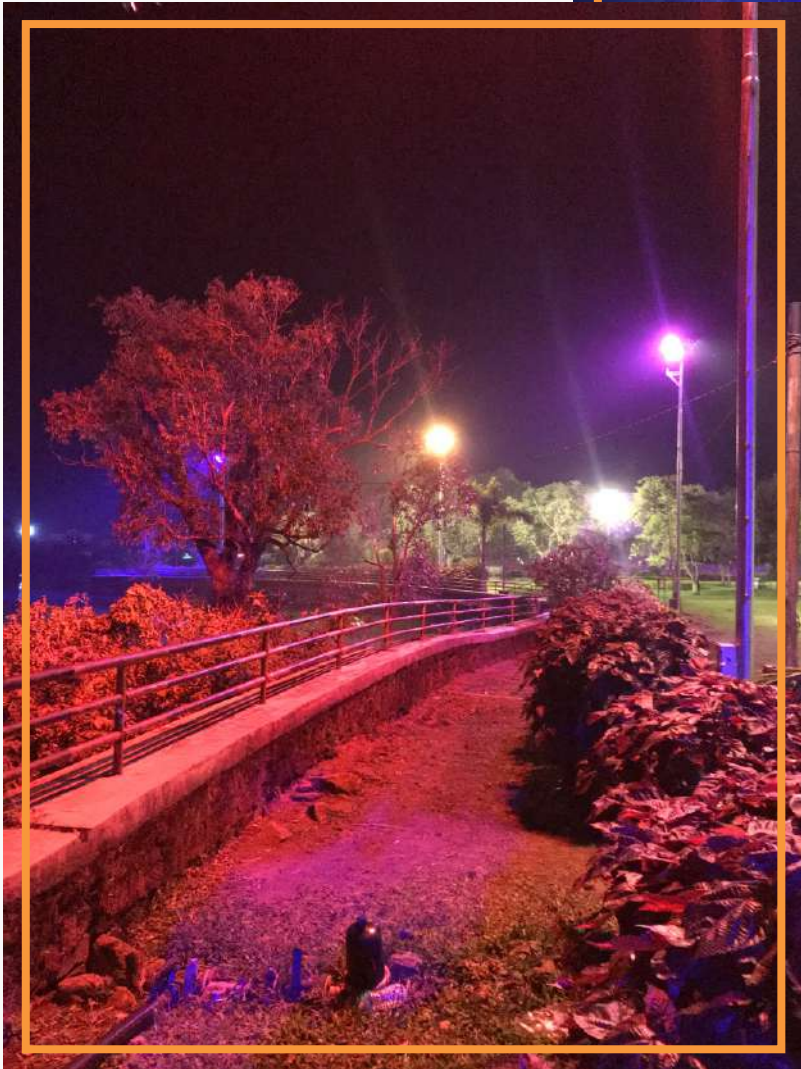
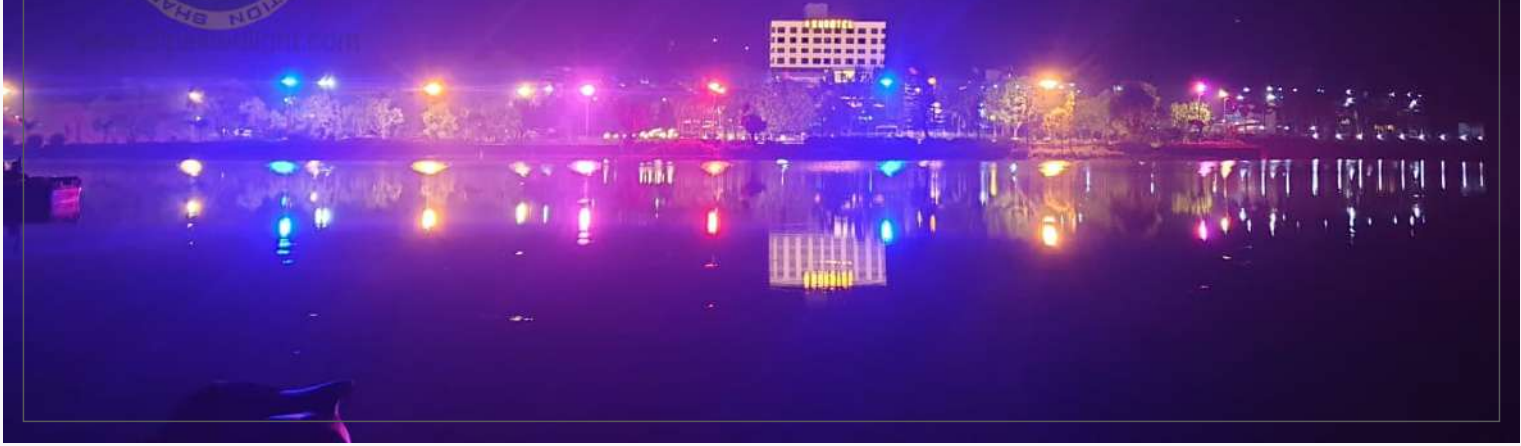
- RATED LIFE : ~30000h at 25° C

APPLICATION :

Replacement for Conventional Halogen Area lighting, Party Plots, Facade and building illumination Industrial Outdoors & Indoor, Gym, Shopping Mall, Sport Stadium, etc...

DIPAK LED LIGHT





CL SOLIS FLOODLIGHT

DIPAK LED LIGHT



DECORATION FLOOD LIGHT is a reliable and cost-effective flood light designed for large-scale exterior installations. The light levels achieved by this compact fixture make it ideal for wall-washing and flood lighting applications. Illuminate maximum covering area in its class, Specially made for industrial and long lasting purpose. Specially design for long service life.

ITEM CODE	WATTAGE	LUMEN OUTPUT
DCLSFL-04-W110SmPoWa12	110W	~14850lm
DCLSFL-05-W160SmPoWa12	160W	~21600lm
DCLSFL-06-W240SmPoWa12	240W	~32400lm
DCLSFL-08-W400SmPoWa12	400W	~54000lm

STANDARDS :

PROTECTION RATING : Ip65
 PERMISSIBLE AMBIENT TEMPERATURE : -20° C + 40° C

MATERIAL :

LED FIXTURE UNIT : Aluminum, Powder coated

ELECTRICAL CONNECTION :

CONNECTION : Three Core 1/0.5sqmm (Green/Yellow is Earthing)
 SURGE VOLTAGE RESISTANCE : 4kV, 1.2/50µs

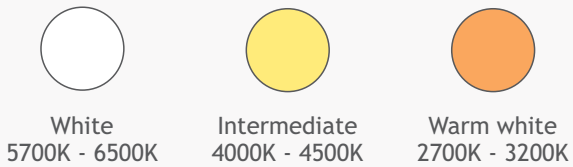
LIGHTING TECHNOLOGY :

COVER : Toughen Glass Transparent
 LIGHT EMISSION : Direct Distribution

LIGHT EMISSION :

LIGHT EMISSION : 0% at 0° inclination

COLORS | CCT :



SERVICE LIFE :

RATED LIFE : ~30000h at 25° C

APPLICATION :

Replacement for Conventional Halogen Area lighting, Party Plots, Facade and building illumination Industrial Outdoors & Indoor, Gym, Shopping Mall, Sport Stadium, etc...

DIPAK LED LIGHT





DIPAK LED LIGHT



44-A, Akshar Industrial Park B/H Amba Industrial Estate, Mehmdavad Road, Phase IV, GIDC Estate, Vatva, Ahmedabad, Gujarat 382425



www.dipakledlight.com



info@dipakledlight.com || dipakledlight@gmail.com



(+91) 70690 78813 || 96878 55333 || 76004 86193

